

DrayTek

Vigorous Networking Solution for SMEs



DATABOOK 2024

DrayTek

Founded in 1997, DrayTek Corporation is a Taiwan-based manufacturer of networking equipment and management systems. From ISDN, VDSL to LTE, DrayTek has always been striving to provide SMBs and professional with reliable, fast and secure connections. Our mission is to deliver high-quality and high-integrated networking services at an affordable price and be your reliable networking solution partner.



Contents

Router

Broadband	3-5
xDSL	6-9
PON	10
Cellular	11-13

Wireless AP	14-16
Switch	17-22
Software / Tools	23-24
Accessories	25-26
Feature Matrix	27-39

Vigor2135 Series

Gigabit Broadband Router



Vigor2135ax

- Gigabit Ethernet WAN port
- 2 USB ports for 3G/4G backup or network storage
- 2 Simultaneous VPN Tunnels including 2 SSL VPN
- Bandwidth Management with intelligent VoIP QoS
- Central Management for VigorAP
- Support DrayDDNS

	WLAN	VoIP	Fiber
Vigor2135			
Vigor2135ac/ax	●		
Vigor2135Vac	●	●	
Vigor2135FVac	●	●	●

Vigor2136 Series

2.5G Broadband Router



- 1x 2.5G Ethernet WAN port
- 1x 2.5GbE + 3x GbE LAN Ports
- 2 USB ports for 3G/4G backup or network storage
- 2 Simultaneous VPN Tunnels including 2 SSL VPN
- Bandwidth Management with intelligent VoIP QoS
- Virtual Controller for VigorAP (for wired and wireless nodes) and VigorSwitch
- Support DrayDDNS

	WLAN	VoIP	Fiber
Vigor2136			
Vigor2136ax	●		
Vigor2136Vax	●	●	
Vigor2136FVax	●	●	●

Vigor2915 Series

Dual-WAN Security Router



- Dual-WAN for load-balancing or redundancy
- 1 USB port for 3G/4G WAN, printer, or network storage
- 16 concurrent VPN tunnels including up to 8 SSL VPN
- Bandwidth management & QoS for the best VoIP quality
- SPI Firewall with Content Filtering by Apps, URL keyword, and web category
- Support DrayDDNS

	WLAN
Vigor2915	
Vigor2915ac	•

Vigor2927 Series

Dual-WAN Security Router



- Dual-WAN for load-balancing or redundancy
- 2 x FXS ports (V model)
- 50 simultaneous VPN tunnels, up to 25 SSL VPN
- SPI Firewall and Content Filtering
- Central Management for VigorAP & VigorSwitch
- Support DrayDDNS

	WLAN	VoIP
Vigor2927		
Vigor2927ac/ax	•	
Vigor2927Vac	•	•

Vigor2962

High Performance Dual-WAN Router

- 4 LAN/WAN configurable ports (1 x 2.5GbE & 1 x SFP/GbE combo & 2 x GbE) (up to 2 simultaneous WANs)
- 2 Gigabit Ethernet LAN ports
- 1x USB 2.0 & 1x USB 3.0
- 200 simultaneous VPN tunnels including up to 50 SSL VPN
- Support High Availability (hardware redundancy)
- Central Management for VigorAP & VigorSwitch
- Support DrayDDNS



Vigor3912 Series

High Performance 10G Router

- 8 x WAN/LAN switchable ports & 4 x fixed LAN ports
- 2 x 10G SFP+ & 2 x 2.5G Ethernet for WAN or LAN
- 2GHz Quad-Core Processor
- 1000k NAT sessions Recommended for a network of 500+ hosts
- 500 simultaneous VPN tunnels including up to 200 SSL VPN
- Supported and managed by VigorACS
- Support DrayDDNS



256GB SSD

Vigor3912

Vigor3912S

Vigor166

G.Fast Modem



- Support G.Fast/VDSL2 35b Super Vectoring/ADSL2+
- Multi-PVC for triple-play applications

Vigor167

Super Vectoring Modem



- Support VDSL2 35b Super Vectoring/ADSL2+
- Multi-PVC for triple-play applications

Vigor2763 Series

ADSL2/2+ & VDSL2 Router



- VDSL2/ADSL2+ Modem/Router
- Robust Firewall & Security for Internet activities
- 2 VPN connections for remote access and LAN-to-LAN
- Bandwidth Management with intelligent VoIP QoS
- Support DrayDDNS

	WLAN
Vigor2763	
Vigor2763 ac	●

Vigor2765 Series

Super Vectoring Security Router



- Support VDSL2 35b Super Vectoring/ADSL2+
- Robust Firewall & Security for Internet activities
- 2 VPN connections for remote access and LAN-to-LAN
- Bandwidth Management with intelligent VoIP QoS
- Support DrayDDNS



Vigor2765ax

	WLAN	VoIP
Vigor2765		
Vigor2765 ac/ax	●	
Vigor2765 Vac	●	●

Vigor2766 Series

G.Fast Security Router



Vigor2766ax

- Support G.Fast/VDSL2 35b Super Vectoring/ADSL2+
- Robust Firewall & Security for Internet activities
- 2 VPN connections for remote access and LAN-to-LAN
- Bandwidth Management with intelligent VoIP QoS
- Support DrayDDNS

	WLAN	VoIP
Vigor2766		
Vigor2766 ac/ax	●	
Vigor2766 Vac	●	●

Vigor2767 Series

Super Vectoring Security Router



- Support VDSL2 35b Super Vectoring/ADSL2+
- 1x 2.5GbE + 3x GbE LAN Ports
- Robust Firewall & Security for Internet activities
- 2 VPN connections for remote access and LAN-to-LAN
- Bandwidth Management with intelligent VoIP QoS
- Support DrayDDNS

	WLAN	VoIP
Vigor2767		
Vigor2767 ax	●	
Vigor2767 Vax	●	●

Vigor2865 Series

Super Vectoring Security Firewall



- Support VDSL2 35b Super Vectoring/ADSL2+
- 2 x FXS ports (V model)
- 32 Simultaneous VPN Tunnels including 16 SSL VPN
- SPI Firewall with Content Filtering
- Central Management for VigorAP & VigorSwitch
- Support DrayDDNS

	WLAN	VoIP
Vigor2865		
Vigor2865ac/ax	•	
Vigor2865Vac	•	•

Vigor2866 Series

G.Fast Security Firewall



- Support G.Fast /VDSL2 35b Super Vectoring/ADSL2+
- 2 x FXS ports (V model)
- 32 Simultaneous VPN Tunnels including 16 SSL VPN
- SPI Firewall with Content Filtering
- Central Management for VigorAP & VigorSwitch
- Support DrayDDNS

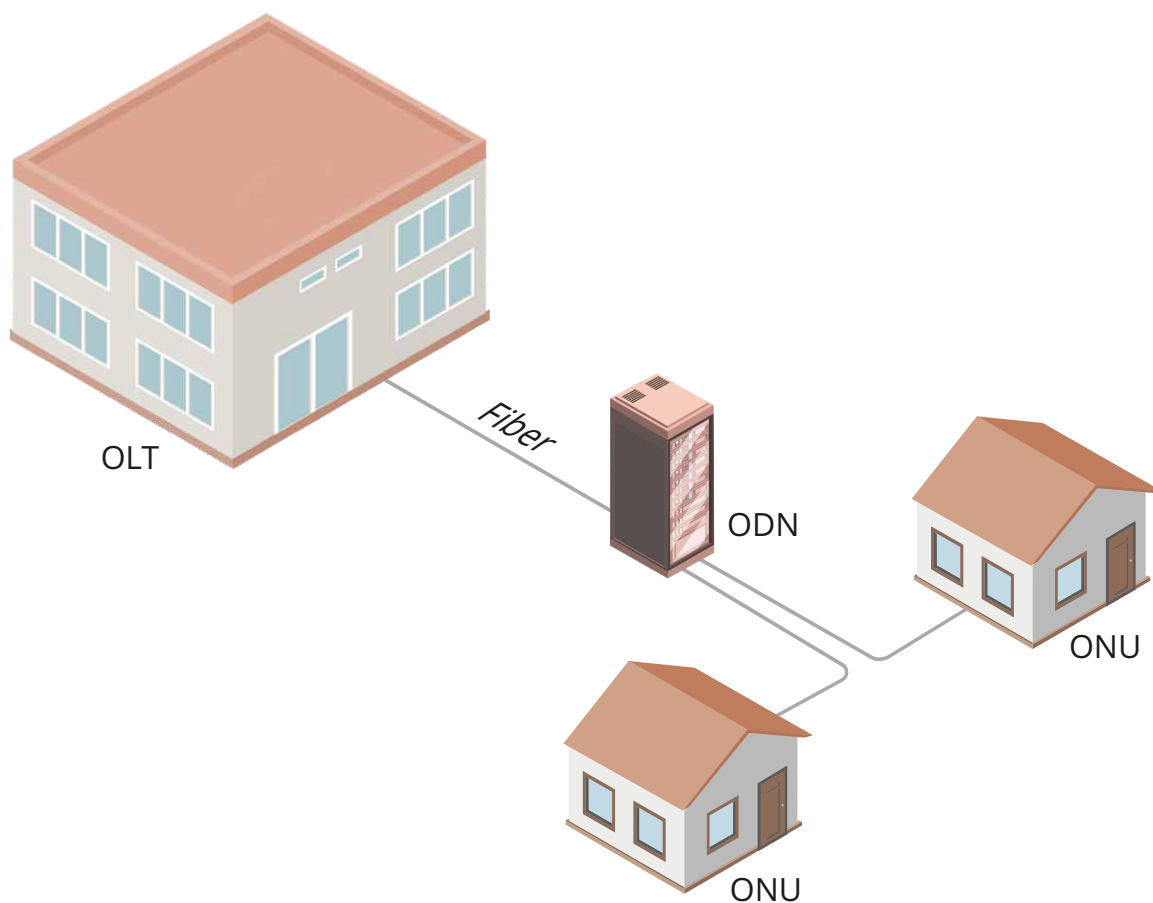
	WLAN	VoIP
Vigor2866		
Vigor2866ac/ax	•	
Vigor2866Vac	•	•

Vigor1100ax

Single-WAN GPON Router



- 1x GPON WAN
- 4x GbE LAN Ports
- Robust Firewall & Security for Internet activities
- 2 VPN connections for remote access and LAN-to-LAN
- AX3000 WiFi 6 Wireless
- Support DrayDDNS



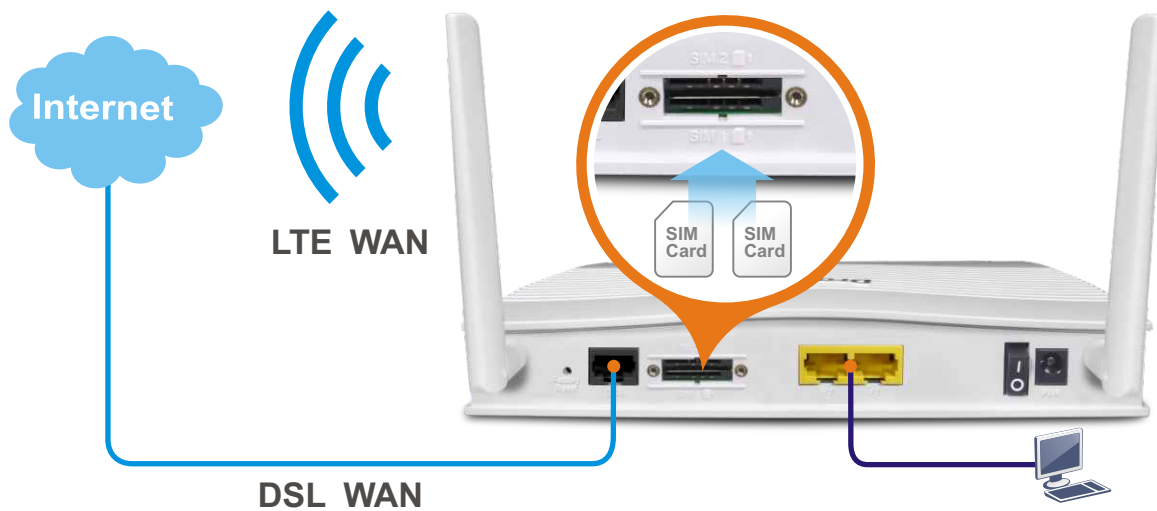
Vigor2620 LTE Series

LTE Router



- Dual SIM for 3G/4G/LTE Cellular Connectivity with speed up to 150 Mbps
- VDSL2/ADSL2+ Modem Router
- Robust Firewall & Security for Internet activities
- 2 VPN connections for remote access and LAN-to-LAN
- Bandwidth Management with intelligent VoIP QoS
- Support DrayDDNS

	DSL	WLAN
Vigor2620L	•	
Vigor2620Ln	•	•



Vigor2865L/2866L Series

Cellular Router



Vigor2865Lax-5G

- LTE cat 6 for L Model, 5G/LTE cat 19 for 5G Model
- VDSL2 35b Super Vectoring/ADSL2+ (2865L/Lac)
- G.Fast /VDSL2 35b Super Vectoring/ADSL2+ (2866L/Lac)
- 32 Simultaneous VPN Tunnels including 16 SSL VPN
- SPI Firewall with Content Filtering
- Central Management for VigorAP & VigorSwitch
- Support DrayDDNS

	WLAN	4G	5G
Vigor2865/2866L		•	
Vigor2865/2866Lac	•	•	
Vigor2865L-5G			•
Vigor2865Lax-5G	•		•



Vigor2865Lac

5G/LTE/WCDMA (5G model)

5G Mode	SA/NSA
5G Band	n1,3,7,8,20,28,38,40,77,78
5G Max. Data Rate	NR SA: 2.4Gbps (DL) / 900Mbps (UL) NR NSA: 2.8Gbps (DL) / 555Mbps (UL)
LTE FDD Band	B1,3,7,8,20,28
LTE TDD Band	B38,40
LTE Category	Cat19 (DL) / Cat18 (UL)
LTE Max. Data Rate	1.6Gbps (DL) / 200Mbps (UL)
WCDMA (3G) Band	B1,8

LTE/WCDMA (L model)

LTE FDD Band	B1,3,7,8,20,28
LTE TDD Band	B38,40
LTE Category	6
LTE Max. Data Rate	300 Mbps (DL) / 50Mbps (UL)
WCDMA (3G) Band	B1,8

For other band availability, please contact your local DrayTek distributor or us.

Vigor2927L Series

Cellular Router



Vigor2927Lax-5G

- LTE cat 6 for L Model, 5G/LTE cat 19 for 5G Model
- Dual-WAN for load-balancing or redundancy
- 50 Simultaneous VPN Tunnels including 25 SSL VPN
- SPI Firewall with Content Filtering
- Central Management for VigorAP & VigorSwitch
- Support DrayDDNS

	WLAN	4G	5G
Vigor2927L		•	
Vigor2927Lac	•	•	
Vigor2927L-5G			•
Vigor2927Lax-5G	•		•



Vigor2927Lac

5G/LTE/WCDMA (5G model)

5G Mode	SA/NSA
5G Band	n1,3,7,8,20,28,38,40,77,78
5G Max. Data Rate	NR SA: 2.4Gbps (DL) / 900Mbps (UL) NR NSA: 2.8Gbps (DL) / 555Mbps (UL)
LTE FDD Band	B1,3,7,8,20,28
LTE TDD Band	B38,40
LTE Category	Cat19 (DL) / Cat18 (UL)
LTE Max. Data Rate	1.6Gbps (DL) / 200Mbps (UL)
WCDMA (3G) Band	B1,8

LTE/WCDMA (L model)

LTE FDD Band	B1,3,7,8,20,28
LTE TDD Band	B38,40
LTE Category	6
LTE Max. Data Rate	300 Mbps (DL) / 50Mbps (UL)
WCDMA (3G) Band	B1,8

For other band availability, please contact your local DrayTek distributor or us.

VigorAP 906

802.11ax Dual-Band AP



- AX3000 dual-band wireless interface
- 1 x PoE-capable GbE + 4 x GbE port
- Plug-n-Play Meshing
- AirTime Fairness and Band Steering
- AP-Assisted Roaming
- Built-in RADIUS server for 802.1x authentication
- Compliant with Vigor central AP management and VigorACS

VigorAP 912C

802.11ac Ceiling-mount AP



- Concurrent Dual-band 802.11ac with 2x2 MIMO
- Delivers data rate of up to 867 Mbps in the 5GHz band and 300 Mbps in the 2.4GHz band
- Plug-n-Play Meshing
- 1 x PoE-capable Gigabit Ethernet port
- AirTime Fairness and Band Steering
- AP-Assisted Roaming
- Built-in RADIUS server for 802.1x authentication
- Compliant with Vigor central AP management and VigorACS

VigorAP 962C

802.11ax 2.5G Ceiling-mount AP



- AX3000 dual-band wireless interface
- Plug-n-Play Meshing
- 1x 2.5GbE PoE-PD
- AirTime Fairness and Band Steering
- AP-Assisted Roaming
- Built-in Virtual Controller, manage VigorAPs (for wired and wireless nodes) when operating in Root mode, or managed by other Root VigorAP/Vigor Router
- Support managed by Router AP Management
- Support managed by VigorConnect/VigorACS

VigorAP 1062C

802.11ax Ceiling-mount AP



- Support 4x4:4 for both 2.4GHz and 5GHz, providing up to 6.0Gbps
- 1x 2.5GbE PoE-PD
- Utilize Transmission Opportunity with OFDMA
- Airtime Fairness
- Band Steering
- AP-Assisted Roaming
- Built-in Virtual Controller, manage VigorAPs (for wired and wireless nodes) when operating in Root mode, or managed by other Root VigorAP/Vigor Router
- Support managed by Router AP Management
- Support managed by VigorConnect/VigorACS

VigorAP 918R Series

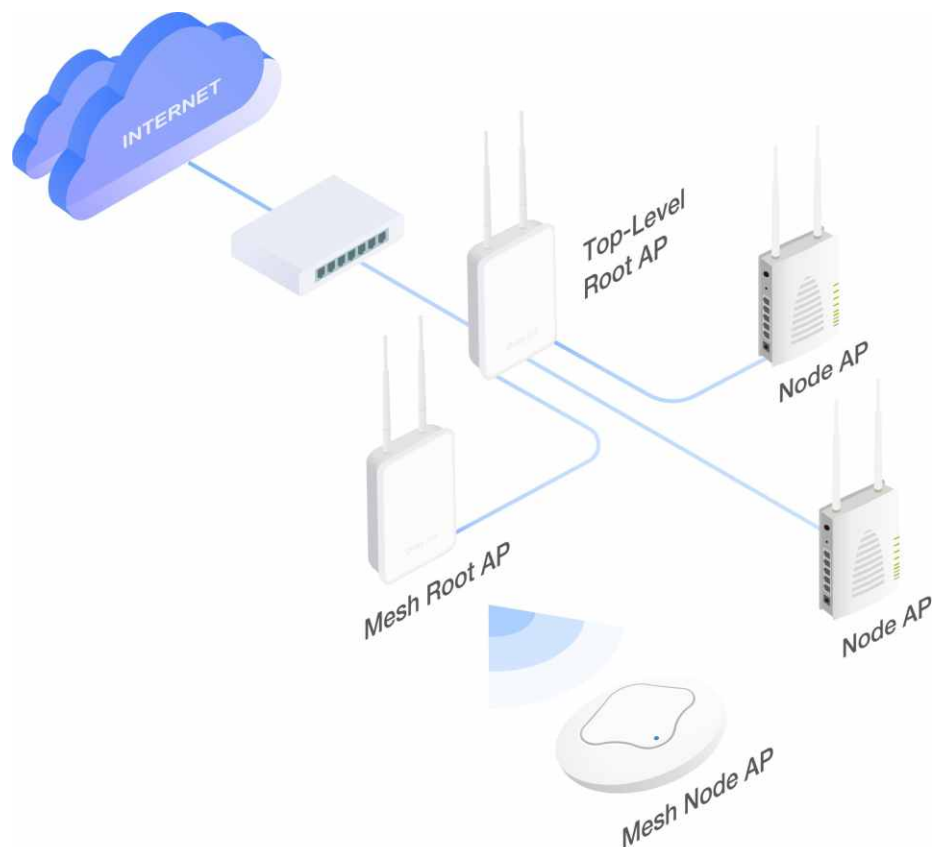
11ac Dual-Band Outdoor AP



- IP67 for outdoor usage, water-proof and dust-resistance
- 2.4/5GHz Dual band WiFi with 2x2 MIMO
- Secure VLAN/SSID grouping, up to 128 WLAN clients manageable per Radio
- IEEE 802.3az/Energy Efficient Ethernet PoE port
- Compatible with AP Management for centralized management
- High RF power for long-distance and expansive coverage
- Built-in 5GHz Direction Antenna selectable (918RPD)

	PoE Out	Directional Antenna
VigorAP 918R		
VigorAP 918RPD	●	●

Root AP for AP Management



VigorSwitch G1080

Smart Lite Gigabit Switch

- Simple and Easy to use network switch
- 8 x Gigabit capable ports
- Support HTTP Web Management
- QoS for application traffic prioritization
- Support 8 VLANs & 1 Trunking Group
- Power saving by 802.3az Energy Efficient Ethernet
- Support Loop Detection & Prevention



Web Smart

VigorSwitch G1282/P1282/P1281x

Web Smart Gigabit Switch

- 24 x Gigabit capable ports & 4 combo Gigabit SFP/RJ-45 ports (G1282/P1282)
- 24 x Gigabit PoE+ capable ports with PoE power budget up to 400 watts (P1282)
- 24 x Gigabit PoE+ capable ports with PoE power budget up to 140 watts & 4 x 10G SFP+ (P1281x)
- Auto Voice VLAN for easy VoIP deployment and best call quality
- Compliant with Switch Management of Vigor Router
- QoS with 8 priority queues and rate limiting
- Dual-stack IPv4/IPv6 support



VigorSwitch G2100/P2100

L2+ Managed Switch

- 8 x Gigabit capable ports & 2 x GbE SFP ports
- 8 x Gigabit PoE+ capable ports with PoE power budget up to 140 watts (P2100)
- VLAN configuration based on 802.1q tag, MAC address, and protocol
- Auto Voice VLAN and Auto Surveillance VLAN to optimize call and video quality
- Secure Local Network by 802.1x Port Security, ACL, IP Source Guard and DHCP Snooping
- Support IPv6 with MLD Snooping, IPv6 ACL, and IPv6 DNS Resolver
- Authentication by local database, multiple RADIUS, and TACACS+ servers
- Support SNMP v1/v2c/v3, RMON, and Syslog for network monitoring
- Compliant with Switch Management of Vigor Router and VigorACS
- Static Route
- DHCP Server



VigorSwitch FX2120

L2+ Managed Switch

- 12 x 10G SFP+ ports
- VLAN configuration based on 802.1q tag, MAC address, and protocol
- Auto Voice VLAN and Auto Surveillance VLAN to optimize call and video quality
- Secure Local Network by 802.1x Port Security, ACL, IP Source Guard and DHCP Snooping
- Support IPv6 with MLD Snooping, IPv6 ACL, and IPv6 DNS Resolver
- Authentication by local database, multiple RADIUS, and TACACS+ servers
- Support SNMP v1/v2c/v3, RMON, and Syslog for network monitoring
- Compliant with Switch Management of Vigor Router and VigorACS
- Static Route
- DHCP Server
- OpenFlow

The OpenFlow functionality is project-based and must be activated by DrayTek HQ.
Please contact your Sales for further inquiries.



VigorSwitch Q2121x/PQ2121x

L2+ Managed 2.5GbE Switch

- 8 x 2.5Gigabit capable ports & 4 x 10G SFP+ ports
- 8 x PoE+ 2.5Gigabit capable ports with PoE power budget up to 140 watts (PQ2121x)
- VLAN configuration based on 802.1q tag, MAC address, and protocol
- Auto Voice VLAN and Auto Surveillance VLAN to optimize call and video quality
- Secure Local Network by 802.1x Port Security, ACL, IP Source Guard and DHCP Snooping
- Support IPv6 with MLD Snooping, IPv6 ACL, and IPv6 DNS Resolver
- Authentication by local database, multiple RADIUS, and TACACS+ servers
- Support SNMP v1/v2c/v3, RMON, and Syslog for network monitoring
- Compliant with Switch Management of Vigor Router and VigorACS
- Static Route
- DHCP Server



VigorSwitch Q2200x/PQ2200xb

L2+ Managed 2.5GbE Switch

- 16 x 2.5Gigabit capable ports & 4 x 10G SFP+ ports
- 4 x PoE++ & 12 x PoE+ 2.5Gigabit capable ports with PoE power budget up to 400 watts (PQ2200xb)
- VLAN configuration based on 802.1q tag, MAC address, and protocol
- Auto Voice VLAN and Auto Surveillance VLAN to optimize call and video quality
- Secure Local Network by 802.1x Port Security, ACL, IP Source Guard and DHCP Snooping
- Support IPv6 with MLD Snooping, IPv6 ACL, and IPv6 DNS Resolver
- Authentication by local database, multiple RADIUS, and TACACS+ servers
- Support SNMP v1/v2c/v3, RMON, and Syslog for network monitoring
- Compliant with Switch Management of Vigor Router and VigorACS
- Static Route
- DHCP Server



VigorSwitch G2282x/P2282x

L2+ Managed Switch

- 24 x Gigabit capable ports & 4 x 10G SFP+ ports
- 24 x Gigabit PoE+ capable ports with PoE power budget up to 400 watts (P2282x)
- VLAN configuration based on 802.1q tag, MAC address, and protocol
- Auto Voice VLAN and Auto Surveillance VLAN to optimize call and video quality
- Secure Local Network by 802.1x Port Security, ACL, IP Source Guard and DHCP Snooping
- Support IPv6 with MLD Snooping, IPv6 ACL, and IPv6 DNS Resolver
- Authentication by local database, multiple RADIUS, and TACACS+ servers
- Support SNMP v1/v2c/v3, RMON, and Syslog for network monitoring
- Compliant with Switch Management of Vigor Router and VigorACS
- AC/DC Dual Input
- Static Route
- DHCP Server
- Stacking



VigorSwitch Q2300x/PQ2300xb

L2+ Managed 2.5GbE Switch

- 24 x 2.5Gigabit capable ports & 6 x 10G SFP+ ports
- 8 x PoE++ & 16 x PoE+ 2.5Gigabit capable ports with PoE power budget up to 400 watts (PQ2300xb)
- VLAN configuration based on 802.1q tag, MAC address, and protocol
- Auto Voice VLAN and Auto Surveillance VLAN to optimize call and video quality
- Secure Local Network by 802.1x Port Security, ACL, IP Source Guard and DHCP Snooping
- Support IPv6 with MLD Snooping, IPv6 ACL, and IPv6 DNS Resolver
- Authentication by local database, multiple RADIUS, and TACACS+ servers
- Support SNMP v1/v2c/v3, RMON, and Syslog for network monitoring
- Compliant with Switch Management of Vigor Router and VigorACS
- Static Route
- DHCP Server
- Stacking



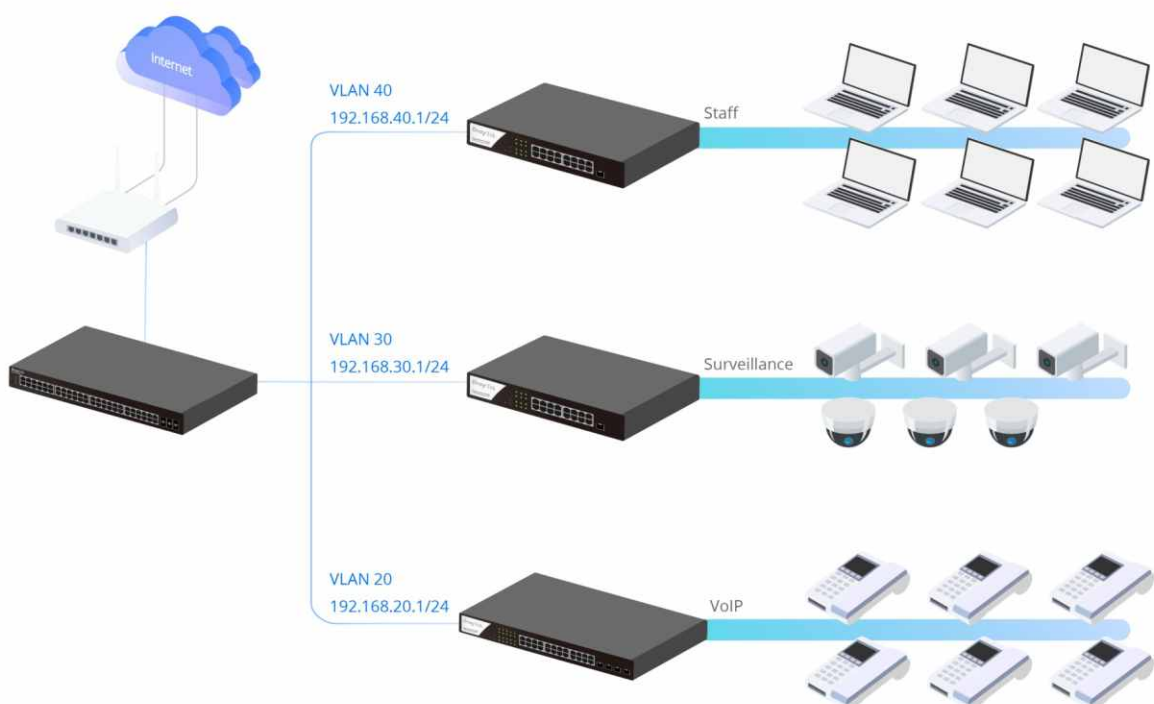
VigorSwitch G2542x/P2542x/P2542xh

L2+ Managed Switch

- 48 x Gigabit capable ports & 6 x 10G SFP+ ports
- 48 x Gigabit PoE+ capable ports with PoE power budget up to 400 watts (P2542x)/720 watts (P2542xh)
- VLAN configuration based on 802.1q tag, MAC address, and protocol
- Auto Voice VLAN and Auto Surveillance VLAN to optimize call and video quality
- Secure Local Network by 802.1x Port Security, ACL, IP Source Guard and DHCP Snooping
- Authentication by local database, multiple RADIUS, and TACACS+ servers
- Support SNMP v1/v2c/v3, RMON, and Syslog for network monitoring
- Compliant with Switch Management of Vigor Router and VigorACS
- Support IPv6 with MLD Snooping, IPv6 ACL, and IPv6 DNS Resolver
- Static Route
- DHCP Server
- Stacking



DHCP Server & VLAN Routing



DAC-CX10

10G SFP+ Direct Attach Passive Copper Cable

DAC-CX10 is designed for providing high-speed data link via copper wire and support both Gigabit and 10 Gigabit Ethernet data rate, compatible to SFP+ MSA to meet Fiber Channel industry standard requirements to ensure performance and reliability.

It is available in 2 models, **DAC-CX10-1m** (Length:1m) and **DAC-CX10-3m** (Length:3m).



DAM-FX10-20K Series

10G SFP+ Module

DAM-FX10-20K Series is an SFP+ Optical single transceiver. It is a small form-factor pluggable transceiver and is designed for use in 10 Gigabit Ethernet connection for a distance of up to 20km over a single SFP+ Module.

DAM-FX10-20K Series provides a high-performance and cost-effective solution, which is ideal for long-distance fiber connectivity. It is available in 2 types, **DAM-FX10-20K-A** (Type A) and **DAM-FX10-20K-B** (Type B).



DAM-EX10-30m

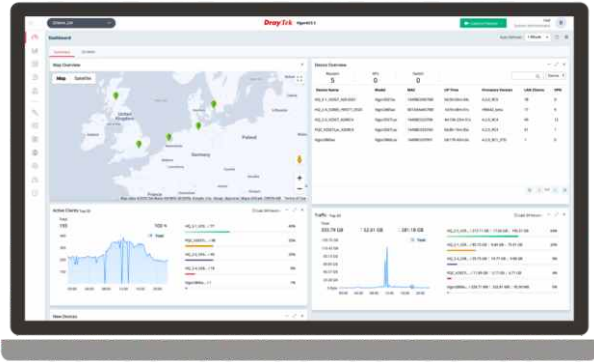
10G Base-T RJ45 SFP+ Module

DAM-EX10-30m transceiver is a compact pluggable SFP+ transceiver that supports multiple connectivity options, including 1G BASE-T, 2.5G BASE-T, 5G BASE-T, and 10G BASE-T. Its Hot-Pluggable SFP+ Footprint feature ensures easy installation. This transceiver is suitable for distances up to 30 meters over Cat 5e/Cat 6a copper cables via RJ-45 connector, providing a cost-effective solution for enterprises to establish connections within racks or other copper interfaces.



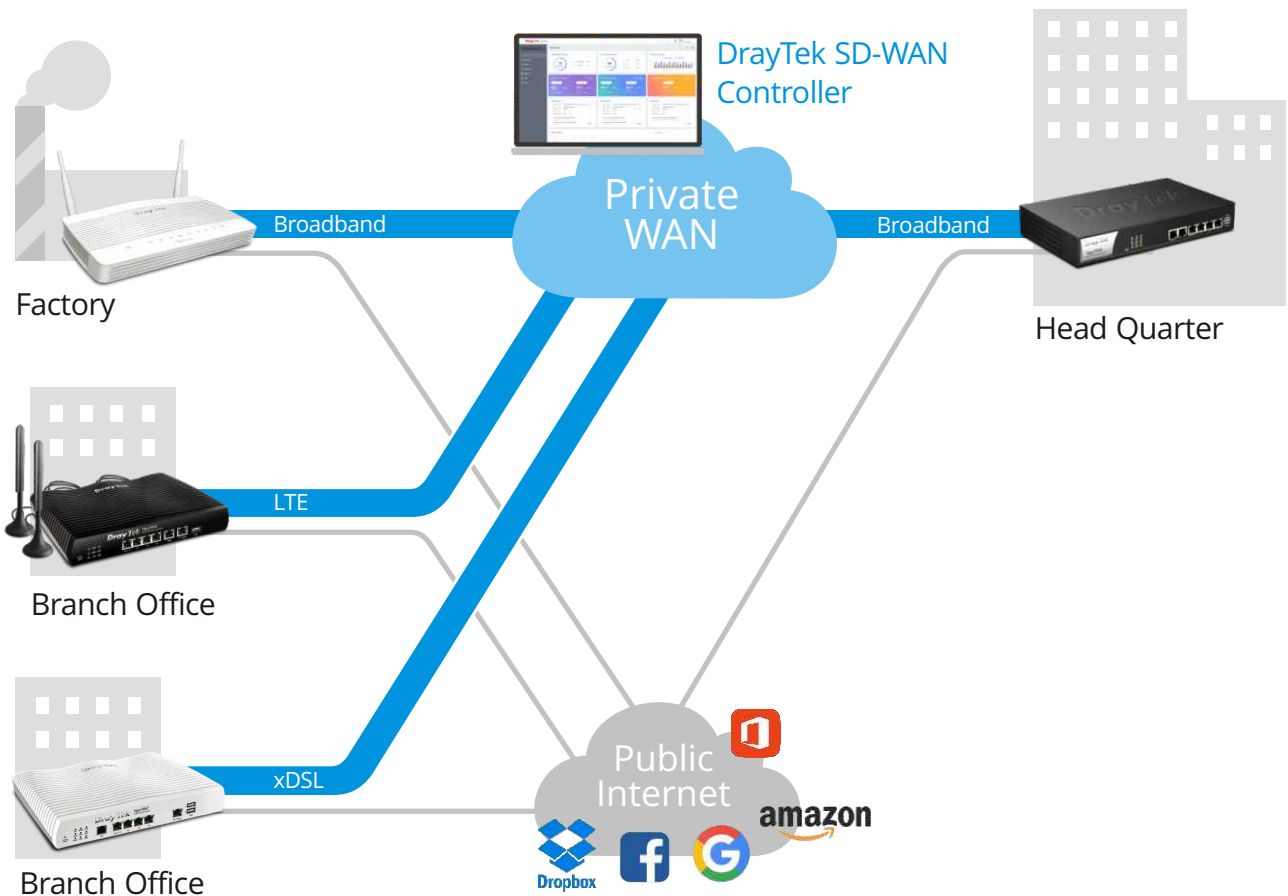
VigorACS 3

NMS for Vigor Devices and SD-WAN Orchestrator



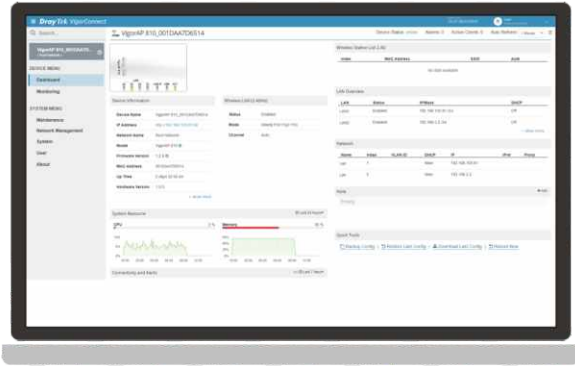
- Zero Touch Deployment and Provisioning
- Auto-VPN for Hub-and-Spoke or Mesh Topology
- Interface Quality and SLA
- VoIP Optimization and Monitoring
- Application Visibility
- Application-Based SD-WAN Policy
- Customized Hotspot Page with Multilingual
- Hotspot Clients Analytics
- ACS Server Load Balancing / Failover

SD-WAN Solution



VigorConnect

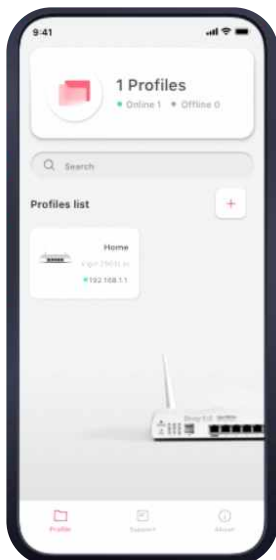
Local Network Management Software for DrayTek Devices



- Automatically discover all VigorAPs/VigorSwitches on your LAN and manage up to 100 devices
- Provision AP profile to APs in a network to set up several VigorAPs; setup the VLAN or PoE for selected Switches
- Get notified when an AP/Switch lost connection with the VigorConnect Server
- Network insights about AP, client, and CPU usage, etc. over a specified period
- Schedule an off-hour firmware upgrade or configure backup/restore

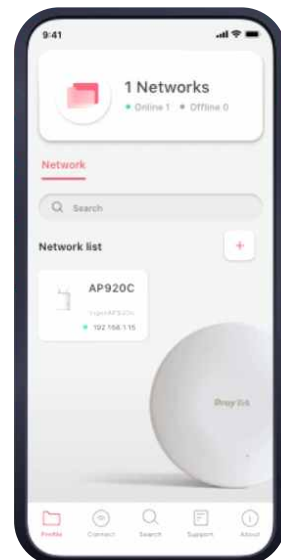
DrayTek Router App

- Work with Vigor Router Series
- Setup major Router functions
- Parental control by content/time



DrayTek Wireless App

- Work with VigorAP Series
- Setup Mesh/Wi-Fi
- Parental control by time



DrayTek URL Reputation

Threat Intelligence Service

DrayTek's URL service is a new level of protection against online threats using cloud-based technology that updates every 5 minutes to keep the network safe. This service adds an extra layer of security protection to LAN client for their online activities. There are 82 categories in total, 10 of which are security-focused, providing comprehensive and up-to-date protection to your network.



VigorPoE 600

802.3af/at PoE Injector

VigorPoE 600 is a single-port passive PoE injector that delivers both power and data to connected PoE devices through a single cable. It can work with all DrayTek PoE compliant PDs, such as IP Cameras, Access Points, and others. The total power output can reach up to 60.5 watts, especially suitable for advanced PD like VigorAP920RPD or Vigor918RPD which consumes more power.

VigorPoE 600 provides an ideal solution with high flexibility to expand your network anywhere, never limited to the power line or outlet, and lower the installation cost.



DrayTek Rack-mount Plate

The rack mount brackets is used for mounting the router onto a 19" standard rack.



USB Thermometer

Temperature Sensor for DrayTek routers

- Direct router/AP connection
- Outer sensor included (1M)
- Data is displayed in °F or °C
- Informative Web Interface
- Alarm Max/Min Thresholds
- Continuous Reporting to syslog
- Email & SMS Reporting on threshold breach
- RoHS Compliant



Antenna Series



	ANT-1205	ANT-2520
Description	2.4GHz/5GHz Indoor Omni-Directional Antenna	2.4GHz/5GHz Indoor Directional Patch Antenna
Environment	Indoor	Indoor
Frequency Range	2400~2500 MHz 5150~5850 MHz	2400~2500 MHz 5150~5875 MHz
Peak Gain @ 2.4GHz	5 dBi	7.5 dBi
@ 5GHz	4.5 dBi	10 dBi
VSWR @ 2.4GHz	< 2.0	≤ 2.0
@ 5GHz	< 2.0	
Polarization	Linear	Vertical, Linear
HPBW/Horizontal @ 2.4GHz		70°
@ 5GHz		60°
HPBW/Vertical @ 2.4GHz		60°
@ 5GHz		30°
Power Handling	1W	2W
Impedance	50 Ω	50 Ω
Connector	RP SMA Plug	RP SMA Plug

Broadband Router

		Vigor2135 series					Vigor2136 series			
		2135	2135ac	2135ax	2135Vac	2135FVac	2136	2136ax	2136Vax	2136FVax
WAN	Fixed WAN	1 x GbE			1 x SFP	1 x 2.5GbE			1 x SFP	
	Switchable WAN/LAN									
LAN	Fixed LAN	4 x GbE				1 x 2.5GbE + 3 x GbE				
	LAN Subnet	4				4				
	DMZ Port									
USB Port		2				2				
WLAN	Standard		11a/b/g/n/ac wave 2	11a/b/g/n/ac wave 2/ax	11a/b/g/n/ac Wave 2		11a/b/g/n/ac wave 2/ax			
	2.4GHz			•			•			
	5GHz			•			•			
	Mesh			•			•			
VPN	Max. VPN	2				2				
	Max. SSL VPN	2				2				
	VPN Matcher	•				•				
Routing	Static Route	•				•				
	Policy Route	•				•				
	RIP	•				•				
	BGP	•				•				
	OSPF	•				•				
Content Filter	APP, Web Category, DNS Keyword	•				•				
	URL Keyword	•				•				
NAT Sessions		50K				50K				
Bandwidth Management		•				•				
DrayDDNS		•				•				
VoIP					•				•	
VPN Management										
AP Management		2				9				
Switch Management						5				

Vigor2915 series		Vigor2927 series				Vigor2962	Vigor3912 series
2915	2915ac	2927	2927ac	2927ax	2927Vac	2962	3912/S
1 x GbE		1 x GbE					
1 x GbE		1 x GbE				1x 2.5GbE + 2x GbE + 1x GbE/SFP Combo	2 x 2.5GbE + 4x GbE + 2x SFP+
3 x GbE		5 x GbE				2 x GbE	4 x GbE
4		8				20	100
		1					
1		2				2	2
	11a/b/g/n/ ac wave 2		11a/b/g/n/ ac wave 2	11a/b/g/n/ ac wave 2/ax	11a/b/g/n/ ac wave 2		
	•			•			
	•			•			
				•			
16		50				200	500
8		25				50	200
•		•				•	•
•		•				•	•
•		•				•	•
•		•				•	•
•		•				•	•
•		•				•	•
•		•				•	•
•		•				•	•
•		•				•	•
•		•				•	•
30K		60K				300K	1000K
•		•				•	•
•		•				•	•
						•	
		8					
		20				50	50
		10				30	30

xDSL Router

		Vigor160 series		Vigor2763 series	
		166	167	2763	2763ac
WAN	Fixed WAN Port	1 x A/VDSL /35b/G.Fast	1 x A/VDSL /35b	1 x A/VDSL	
	WAN/LAN Switchable Port			1 x GbE	
LAN	Fixed LAN Port	2 x GbE		3 x GbE	
	LAN Subnet	1		4	
	DMZ Port				
USB Port				2	
WLAN	Standard			11a/b/g/n/ ac wave 2	
	2.4GHz			•	
	5GHz			•	
	Mesh			•	
VPN	Max. VPN			2	
	Max. SSL VPN			2	
	VPN Matcher			•	
Routing	Static Route	•		•	
	Policy Route			•	
	RIP	•		•	
	BGP				
	OSPF				
Content Filter	APP, Web Category, DNS Keyword			•	
	URL Keyword	•		•	
NAT Sessions		10K		50K	
Bandwidth Management				•	
DrayDDNS				•	
VoIP					
VPN Management					
AP Management				2	
Switch Management					

Vigor2765 series				Vigor2766 series			
2765	2765ac	2765ax	2765Vac	2766	2766ac	2766ax	2766Vac
1 x AVDSL/35b				1 x AVDSL/35b/G.Fast			
1 x GbE				1 x GbE			
3 x GbE				3 x GbE			
4				4			
2				2			
	11a/b/g/n/ ac wave 2	11a/b/g/n/ ac wave 2/ax	11a/b/g/n/ ac wave 2		11a/b/g/n/ ac wave 2	11a/b/g/n/ ac wave 2/ax	11a/b/g/n/ ac wave 2
		•				•	
		•				•	
		•				•	
2				2			
2				2			
•				•			
•				•			
•				•			
•				•			
•				•			
•				•			
•				•			
•				•			
•				•			
50K				50K			
•				•			
•				•			
			•				•
2				2			

xDSL Router

		Vigor2767 series			Vigor2865 series			
		2767	2767ax	2767Vax	2865	2865ac	2865ax	2865Vac
WAN	Fixed WAN Port	1 x AVDSL/35b			1 x AVDSL/35b			
	WAN/LAN Switchable Port	1 x 2.5GbE			1 x GbE			
LAN	Fixed LAN Port	3 x GbE			5 x GbE			
	LAN Subnet	4			8			
	DMZ Port				1			
USB Port		2			2			
WLAN	Standard		11a/b/g/n/ ac wave 2/ax			11a/b/g/n/ ac wave 2	11a/b/g/n/ ac wave 2/ax	11a/b/g/n/ ac wave 2
	2.4GHz		•			•		
	5GHz		•			•		
	Mesh		•			•		
VPN	Max. VPN	2			32			
	Max. SSL VPN	2			16			
	VPN Matcher	•			•			
Routing	Static Route	•			•			
	Policy Route	•			•			
	RIP	•			•			
	BGP	•			•			
	OSPF	•						
Content Filter	APP, Web Category, DNS Keyword	•			•			
	URL Keyword	•			•			
NAT Sessions		50K			60K			
Bandwidth Management		•			•			
DrayDDNS		•			•			
VoIP			•					•
VPN Management					8			
AP Management		9			20			
Switch Management		5			10			

PON Router

Vigor2866 series			
2866	2866ac	2866ax	2866Vac
1 x A/VDSL/35b/G.Fast			
1 x GbE			
5 x GbE			
8			
1			
2			
	11a/b/g/n/ ac wave 2	11a/b/g/n/ ac wave 2/ax	11a/b/g/n/ ac wave 2
		•	
		•	
		•	
32			
16			
•			
•			
•			
•			
•			
•			
•			
•			
•			
60K			
•			
•			
			•
8			
20			
10			

Vigor1100 series
1100ax
1 x GPON
1 x GbE
3 x GbE
4
1
11a/b/g/n/ac/ax
•
•
2
•
•
•
•
•
•
•
•
•
50K
•
•

Cellular Router

		Vigor2620 LTE series		Vigor2865L series				Vigor2866L series	
		2620L	2620Ln	2865L	2865Lac	2865L-5G	2865Lax-5G	2866L	2866Lac
WAN	Fixed WAN Port	1 x A/VDSL + 1 x LTE		1 x A/VDSL/35b + 1 x LTE				1 x A/VDSL/35b/G.Fast + 1 x LTE	
	WAN/LAN Switchable Port	1 x GbE		1 x GbE				1 x GbE	
LAN	Fixed LAN Port	1 x GbE		5 x GbE				5 x GbE	
	LAN Subnet	2		8				8	
	DMZ Port			1				1	
USB Port				1				1	
WLAN	Standard		11b/g/n		11a/b/g/n/ ac wave 2		11a/b/g/n/ ac wave 2/ax		11a/b/g/n/ ac wave 2
	2.4GHz		•		•		•		•
	5GHz				•		•		•
	Mesh				•		•		•
VPN	Max. VPN	2		32				32	
	Max. SSL VPN	2		16				16	
	VPN Matcher	•		•				•	
Routing	Static Route	•		•				•	
	Policy Route	•		•				•	
	RIP	•		•				•	
	BGP	•		•				•	
	OSPF								
Content Filter	APP, Web Category , DNS Keyword	•		•				•	
	URL Keyword	•		•				•	
NAT Sessions		30K		60K				60K	
Bandwidth Management		•		•					
Cellular		4G		4G		5G		4G	
VoIP									
VPN Management				8				8	
AP Management		2		20				20	
Switch Management				10				10	

Vigor2927L series			
2927L	2927Lac	2927L-5G	2927Lax-5G
1 x GbE + 1 x LTE			
1 x GbE			
5 x GbE			
8			
1			
1			
	11a/b/g/n/ ac wave 2		11a/b/g/n/ ac wave 2/ax
	•		•
	•		•
	•		•
50			
25			
•			
•			
•			
•			
•			
•			
•			
•			
60K			
•			
4G		5G	
8			
20			
10			

Access Point

		VigorAP 906	VigorAP 912C	VigorAP 962C	VigorAP 1062C
		906	912C	962C	1062C
Band	2.4GHz	•	•	•	•
	5GHz	•	•	•	•
Max. Link Rate (Mbps)		574+2402	300 + 867	574+2402	1200+4800
Max. Clients (per band)		254 (127)	256 (128)	256 (128)	256 (128)
Environment		Indoor	Indoor	Indoor	Indoor
Port	1 GbE	5	1		
	2.5 GbE			1	1
USB Port					
Power Input		DC / PoE	DC / PoE	DC / PoE	DC / PoE
PoE Out					
Antenna		2 x 2 External	2 x 2 Internal	2 x 2 Internal	4 x 4 Internal
Mounting (Desk/Wall/Ceiling/Pole)		D/W	C/W	C/W	C/W
Wi-Fi Standard		11a/b/g/n/ ac wave 2/ax	11a/b/g/n/ ac wave 2	11a/b/g/n/ ac wave 2/ax	11a/b/g/n/ ac wave 2/ax
AP-Assisted Roaming		•	•	•	•
AirTime Fairness		•	•	•	•
Band Steering		•	•	•	•
Max. Number of SSID (per band)		8 (4)	8 (4)	8 (4)	16 (8)
802.1q tag-based VLAN		•	•	•	•
Built-in RADIUS Server		•	•	•	•
Stand-alone Operation		•	•	•	•
Mesh		Root, Node	Root, Node	Root, Node	Root, Node
VigorRouter Mgmt. (APM)		•	•	•	•

VigorAP 918R series	
918R	918RPD
•	•
•	•
400 + 867	400 + 867
256 (128)	256 (128)
Outdoor	Outdoor
1	2
PoE	PoE
	•
2 x 2 External	2 x 2 External + Internal
W/P	W/P
11a/b/g/n/ ac wave 2	11a/b/g/n/ ac wave 2
•	•
•	•
•	•
8 (4)	8 (4)
•	•
•	•
•	•
Root, Node	Root, Node
•	•

Feature Matrix

Switch

		Smart Lite	Web Smart			L2+ Managed		
		G1080	G1282	P1282	P1281x	G2100	P2100	FX2120
Ports	RJ-45	8 x GbE	24 x GbE	24 x GbE	24 x GbE	8 x GbE	8 x GbE	
	SFP				4 (SFP+)	2	2	12 (SFP+)
	SFP/GbE Combo		4	4				
	Console					•	•	•
PoE	Ports			24 PoE+	24 PoE+		8 PoE+	
	Power Budget (watts)			400	140		140	
LAN	Spanning Tree		STP, RSTP	STP, RSTP	STP, RSTP	STP, RSTP, MSTP	STP, RSTP, MSTP	STP, RSTP, MSTP
	ONVIF Surveillance		•	•	•	•	•	•
VLAN	Tag-Based	•	•	•	•	•	•	•
	MAC-Based		•	•	•	•	•	•
	Voice & Surveillance VLAN		•	•	•	•	•	•
	GVRP					•	•	•
	QinQ (Basic)					•	•	•
Layer3 Features	Static Route					•	•	•
	VLAN Route					•	•	•
	DHCP Server					•	•	•
Multicast	IGMP Snooping	v2	v2, v3(BISS)	v2, v3(BISS)	v2, v3(BISS)	v2, v3(BISS)	v2, v3(BISS)	v2, v3(BISS)
	IGMP Querier		•	•	•	•	•	•
Security	IP Conflict Prevention		•	•	•	•	•	•
	IPSG		•	•	•	•	•	•
	Access Control		•	•	•	•	•	•
	DAI					•	•	•
	DHCP Snooping					•	•	•
Management	sFlow							•
	SNMP		v1/v2c/v3	v1/v2c/v3	v1/v2c/v3	v1/v2c/v3	v1/v2c/v3	v1/v2c/v3
	LLDP		•	•	•	•	•	•
	SWM	•	•	•	•	•	•	•

L2+ Managed					
Q2121x	PQ2121x	Q2200x	PQ2200xb	G2282x	P2282x
8 x 2.5GbE	8 x 2.5GbE	16 x 2.5GbE	16 x 2.5GbE	24 x GbE	24 x GbE
4 (SFP+)	4 (SFP+)	4 (SFP+)	4 (SFP+)	4 (SFP+)	4 (SFP+)
•	•	•	•	•	•
	8 PoE+		4 PoE++ & 12 PoE+		24 PoE+
	140		400		400
STP, RSTP, MSTP	STP, RSTP, MSTP	STP, RSTP, MSTP	STP, RSTP, MSTP	STP, RSTP, MSTP	STP, RSTP, MSTP
•	•	•	•	•	•
•	•	•	•	•	•
•	•	•	•	•	•
•	•	•	•	•	•
•	•	•	•	•	•
•	•	•	•	•	•
•	•	•	•	•	•
•	•	•	•	•	•
•	•	•	•	•	•
•	•	•	•	•	•
•	•	•	•	•	•
•	•	•	•	•	•
v2, v3(BISS)	v2, v3(BISS)	v2, v3(BISS)	v2, v3(BISS)	v2, v3(BISS)	v2, v3(BISS)
•	•	•	•	•	•
•	•	•	•	•	•
•	•	•	•	•	•
•	•	•	•	•	•
•	•	•	•	•	•
•	•	•	•	•	•
•	•	•	•	•	•
•	•	•	•	•	•
v1/v2c/v3	v1/v2c/v3	v1/v2c/v3	v1/v2c/v3	v1/v2c/v3	v1/v2c/v3
•	•	•	•	•	•
•	•	•	•	•	•

		L2+ Managed			
		Q2300x	PQ2300xb	G2542x	P2542x/xh
Ports	RJ-45	24 x 2.5GbE	24 x 2.5GbE	48 x GbE	48 x GbE
	SFP	6 (SFP+)	6 (SFP+)	6 (SFP+)	6 (SFP+)
	SFP/GbE Combo				
	Console	•	•	•	•
PoE	Ports		8 PoE++ & 16 PoE+		48 PoE+
	Power Budget (watts)		400		400/720
LAN	Spanning Tree	STP, RSTP, MSTP	STP, RSTP, MSTP	STP, RSTP, MSTP	STP, RSTP, MSTP
	ONVIF Surveillance	•	•	•	•
VLAN	Tag-Based	•	•	•	•
	MAC-Based	•	•	•	•
	Voice & Surveillance VLAN	•	•	•	•
	GVRP	•	•	•	•
	QinQ (Basic)	•	•	•	•
Layer3 Features	Static Route	•	•	•	•
	VLAN Route	•	•	•	•
	DHCP Server	•	•	•	•
Multicast	IGMP Snooping	v2, v3(BISS)	v2, v3(BISS)	v2, v3(BISS)	v2, v3(BISS)
	IGMP Querier	•	•	•	•
Security	IP Conflict Prevention	•	•	•	•
	IPSG	•	•	•	•
	Access Control	•	•	•	•
	DAI	•	•	•	•
	DHCP Snooping	•	•	•	•
Management	sFlow	•	•	•	•
	SNMP	v1/v2c/v3	v1/v2c/v3	v1/v2c/v3	v1/v2c/v3
	LLDP	•	•	•	•
	SWM	•	•	•	•

DrayTek

www.draytek.com

Tel: +886-3-5972727 Fax: +886-3-5972121 E-mail: info@draytek.com

Trademarks and brand names are the properties of their respective owners.
The scope of delivery and other details are subject to change without prior notice.

Copyrights © DrayTek Corp. All right reserved.